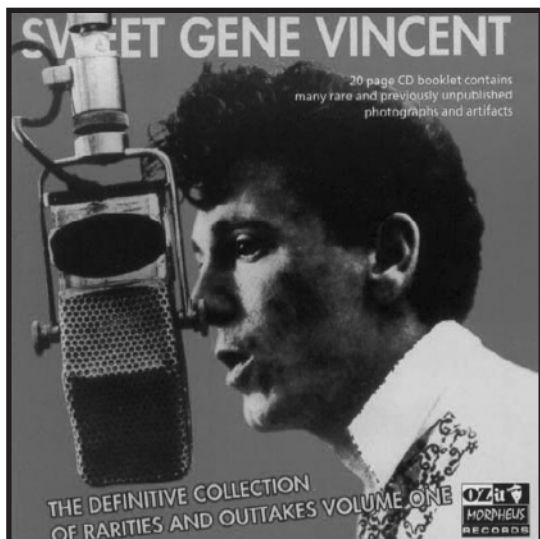


MORPHIUS RECORDS, IN CONJUNCTION WITH CARGO RECORDS UK, IS PLEASED TO PRESENT

GENE VINCENT

"SWEET GENE VINCENT" CD



GENE VINCENT SWEET GENE VINCENT

Cat#: OZITCD221



Format: CD

Price: \$9.29 Distro / \$9.69 Store

Street Date: 6/13/06

Barcode: 5033531022123

TRACK LISTING

(spotlight tracks in bold)

- 1) You Are The One For Me [early studio outtake]
- 2) Wildcat [short rare live track]
- 3) High Blood Pressure [early studio outtake]
- 4) I Might Have Known [early studio outtake]
- 5) Be Bop A Lula** [live]
- 6) Say Mama [live in the UK 1970's]
- 7) Crazy Beat [early studio outtake]
- 8) That's The Trouble With Love [early studio outtake]
- 9) Whole Lotta Shakin**
[live from shortly before Gene's death]
- 10) Dance To The Bop [from 1970's]
- 11) I'm Gonna Catch Me A Rat [early studio outtake]
- 12) Good Golly Miss Molly** [live late 1960's]
- 13) Teardrops [early studio outtake]
- 14) Bluejean Bop [studio track 1960's]
- 15) Baby Blue [live 1970's]
- 16) Pistol Packin' Mama [studio 1960's]
- 17) Rainy Day Sunshine [studio late 1960's]

ARTIST BIO

Gene Vincent was an American rockabilly idol, best known for his major hit "Be-Bop-A-Lula". He started playing in various country bands in his native Norfolk, Virginia after leaving the United States Navy with a permanent leg injury. He signed at **Capitol Records** with his backing band The Blue Caps. The group had another hit with 1957's "Lotta Lovin'." Vincent also became one of the first rock stars to also star in a feature film, *The Girl Can't Help It*. Vincent maintained a huge and discerning audience in Europe, especially England and France, until his death in 1971 from a ruptured stomach ulcer. His stage shows became "must see" events and his bands through those years were to spawn some of the most respected players in the world today. His work is often sighted as a major influence on **Elvis Presley**, and Vincent was the first inductee into the *Rockabilly Hall of Fame* on its formation in 1997. The following year he was also posthumously inducted into the *Rock and Roll Hall of Fame*.

OVERVIEW

The disc, "Sweet Gene Vincent" compiles 17 tracks from early studio outtakes and live recordings, most of which have never been released before. In addition, the 20 page booklet features rare and previously unpublished photographs. This CD is an essential collection for fans of rockabilly and early rock and roll alike.

SELLING POINTS

- A definitive collection of rarities and outtakes.
- Includes 20-page booklet featuring many rare photographs.



CARGO RECORDS



Distributed in North America by MorphiUS Records, Inc.

(Not exportable to UK/Europe)

100 E. 23rd St., Baltimore, MD 21218 info@morphius.com
www.morphius.com 410-662-0112 tel. 410-662-0116 fax
distributor rep: matt@morphius.com